



THE RESTORE ACTION

The **RESTORE Action** aims to bring about a paradigm shift in the construction industry towards restorative sustainability that promotes future-oriented thinking and multidisciplinary application of knowledge in the building scope.

The **RESTORE Action** advocates and mentors for a regenerative built environment, through working groups, training schools (including learning design competitions) and Short Term Scientific Missions (STSMs). Also, to facilitate communication and dissemination of results, our Action offers conference grants and open access publication grants.



eurac
research

 Funded by the Horizon 2020 Framework Programme of the European Union



Tel. +39 0471 055 600 · info@eurestore.eu

www.eurestore.eu

find #CostRestore on



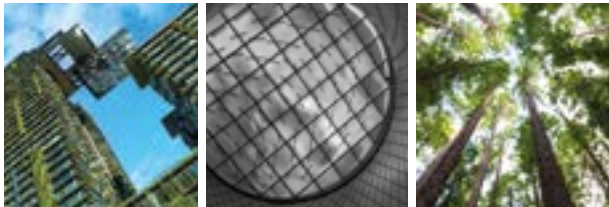
REthinking Sustainability TOwards a Regenerative Economy





THE PROJECT

Sustainable buildings and facilities are critical to a future that is socially just, ecologically restorative, culturally rich and economically viable within the climate change context. Despite over a decade of strategies and programmes, progress on built environment sustainability fails to address these critical climate change, human and planetary health issues. Consequently, the built environment sector no longer has the luxury of being incrementally less bad, but, with urgency, needs to adopt net-positive, restorative sustainability thinking to incrementally do „more good“.



WORKING GROUPS

WORKING GROUP 1

RESTORATIVE SUSTAINABILITY

Re-defining sustainability for a future regenerative built environment economy.

WORKING GROUP 2

RESTORATIVE DESIGN PROCESS

Defining Processes, Methods and Tools for regenerative built environment Design.

WORKING GROUP 3

RESTORATIVE BUILDING AND OPERATIONS

Solutions and implementation strategies for a paradigm shift for the construction and operation of regenerative buildings.

WORKING GROUP 4

RETHINKING TECHNOLOGY

Impact and influence of technologies for a regenerative built environment sector.

WORKING GROUP 5

SCALE JUMPING

Thinking beyond the building, identifying scale jumping potentials to a neighbourhood and city level regenerative sustainability.

Finally the **RESTORE Action Working Groups** close with an „Atlas of Solutions“.

